



**WINDOWS & DOORS**  
Proudly Canadian



A diverse group of people, including men and women of various ages and ethnicities, are shown from a high-angle perspective. They are all wearing business or professional attire and have their right fists raised in a gesture of celebration or agreement. Their expressions are joyful and enthusiastic. The background is a simple wooden wall.

# Satisfied Customers



# OVERVIEW

Since 1986, Anig Windows has supplied the industry with quality windows using superior components. Our expertise ensures your complete satisfaction with every custom project. Anig Windows manufactures high quality vinyl and aluminum windows designed to be durable, maintenance free, energy efficient and that are exact to your specifications. Our continuous success has always been based on providing our clients with great customer service and competitive pricing.

Enzo Angheloni,



President

# OUR SUPPLIERS

## P.H. Tech

Top-rated window and door designs. Expect Real Performance That's Built to Last

## Interlock

Supplier of double hung and slider locks

## Roll-A-Way

Supplier of screen bar, screening material and screen corners

## Caldwell

Suppliers of double hung balances

## Interlock

Suppliers of casement and awning operators, and 14" stainless steel hinges, stainless steel multipoint bar, multipoint bar guides, multipoint operator, casement snubbers

## Sico

Supplier of profile colouring system

## Guardian

Supplier of Low-E Glass

## Amesbury

Supplier of weather stripping and balances

## Pilkington

Supplier of Low-E Glass

## SIL

Suppliers of slider glides, casement anti sag block, tilt latches





## CASEMENT & AWNING WINDOWS

### **Contemporary look Unobstructed view**

They capture the breeze and provide excellent ventilation. Because casement or awning windows open outward, they can be placed freely in any home without blocking lamps, plants or other indoor items. Awning windows can be set in rows, or combined with other windows to create spectacular walls of light and glass. Ideal for homes built on seacoasts, in humid regions and in other areas subject to extreme weather conditions.

## Superior quality point by point

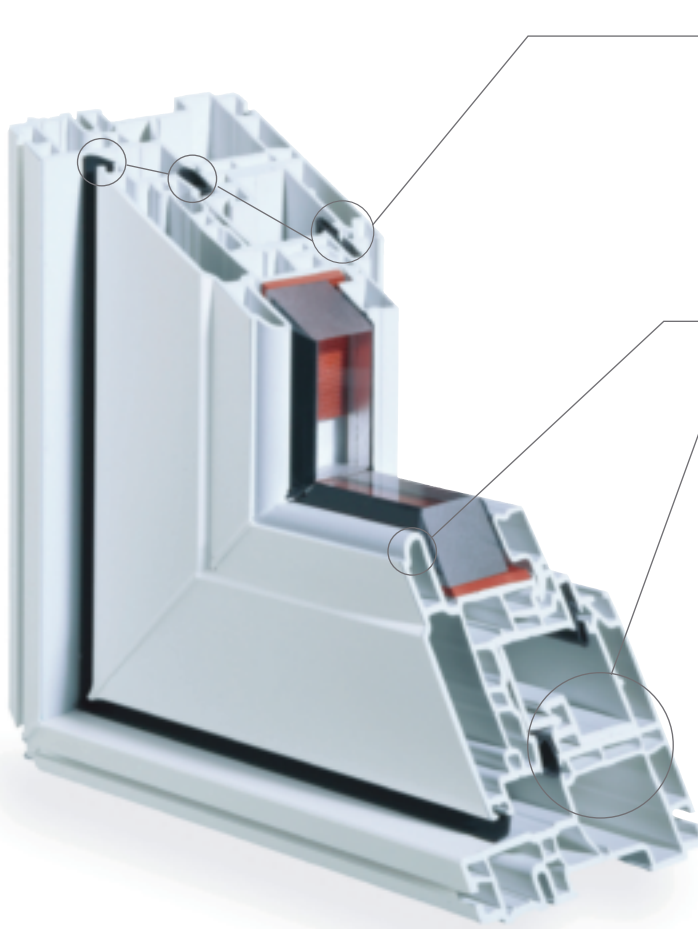
At P.H. Tech, today's leading technologies go into a complete line of fully accessorized windows, making it easy for you to customize windows to your exact needs. This window is completely compatible with all other P.H. Tech window systems and designed for use with all interior and exterior accessories.



Casement



Awning



- 1 Multiple-layer weather stripping
- 2 Design lets the maximum light in
- 3 Sashes designed to bring you back to the times of wood windows without sacrificing the benefits of PVC
- 4 Fusion-welded corners seal out water and wind
- 5 Multi-chamber system resists warping even in extreme conditions
- 6 Exclusive anchoring screws fasten hardware securely
- + **Additional features**

Can be installed as structural or modular windows

Can be specially reconfigured in any number of ways

Durability and elegance add value to any home

Superior thermal insulation

Convenient operating panels allow easy cleaning from inside

Sashes readily accept a wide range of energy-smart glass options

Rigorous performance testing ensures years of trouble-free operation



Test results for product manufactured according to P.H. Tech specifications\*

	DIMENSIONS	CSA A440				AAMA /WDMA / CSA 101 / I.S 2 / A440-05
Stylish sash casement / fixed windows	800 x 1500 (32 x 59)	A3	B7	C5	F2	C-C80
Awning windows	1200 x 800 (48 x 32)	A3	B7	C5	F2	AW-R70

A photograph of a bathroom featuring a large window group with multiple single-hung and single-slider windows. The windows offer a view of a lush, green forested hillside. In the foreground, a white bathtub with a gold faucet is set on a marble countertop. To the right, a wooden vanity with a mirror and a three-bulb light fixture is visible. The floor is tiled with a geometric pattern.

## SINGLE-HUNG & SINGLE-SLIDER WINDOWS

### *Traditional look*

Single-hung windows open without blocking exterior space—ideal for openings on patios, walks or verandas. Windows open on the inside, so you can clean them from indoors. Ideal for creating large window groups. Install this window at a right angle, and it's a single-slider—easy to operate and maintain. Ideal for homes built on seacoasts, in humid regions and in other areas subject to extreme weather conditions.

## Superior Quality Point by Point

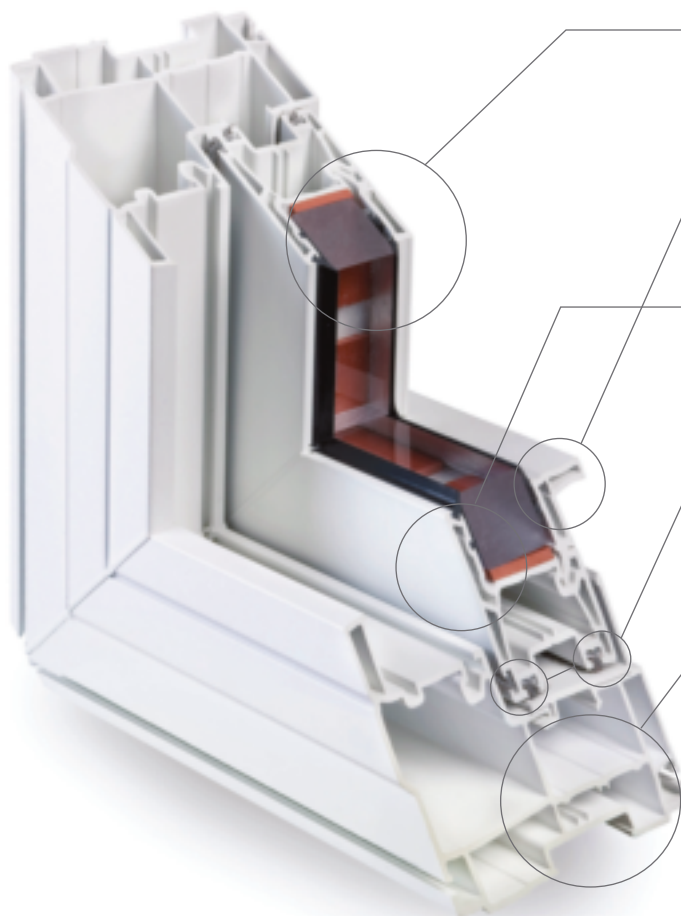
At P.H. Tech, today's leading technologies go into a complete line of fully accessorized windows, making it easy for you to customize windows to your exact needs. This window is completely compatible with all other P.H. Tech window systems and designed for use with all interior and exterior accessories.



Single-Slider



Single-Hung



- 1 Interior glazing bead design constitutes a key security feature, allowing the window to withstand winds of over 330 km/h (205 mph).
- 2 The full size, double-walled handle bead is exceptionally sturdy.
- 3 The double walls of the sash give it increased sound abatement qualities and strength.
- 4 Quadruple weather stripping provides remarkable airtightness, reducing heating and air conditioning costs.
- 5 Multi-chamber system resist warping, even in extreme conditions.

### + Additional features

Can be specially configured in any number of ways

Durability and elegance add value to any home

Convenient operating panels allow easy cleaning from inside

Using insulated glass up to 7/8" thick, this series provides a full range of options for maximum thermal efficiency

Rigorous performance testing ensures years of trouble-free operation



Test results for product manufactured according to P.H. Tech specifications\*

	DIMENSIONS	CSA A440				AAMA / WDMA / CSA 101 / I.S 2 / A440-05
Single-hung windows	1000 x 1600 (40 x 63)	A3	B3	C3	F2	H-R40
Single-slider windows	1600 x 1100 (63 x 43)	A3	B3	C3	F2	HS-R50

A woman with short blonde hair, wearing a brown button-down shirt over a white t-shirt and blue jeans, is cleaning a white double-hung window. She is holding a blue cloth and wiping the glass. The window is open, showing a view of green trees and a blue sky. The room has green walls and a wooden floor.

## DOUBLE-HUNG & DOUBLE-SLIDER WINDOWS

### *Traditional look*

Double-hung windows open without blocking exterior space—ideal for openings on patios, walks or verandas. Windows open from the inside, so you can clean them from indoors. Ideal for creating large window groups. Install this window at a right angle, and it's a double-slider— easy to operate and maintain. Ideal for homes built on seacoasts, in humid regions and in other areas subject to extreme weather conditions.

## Superior Quality Point by Point

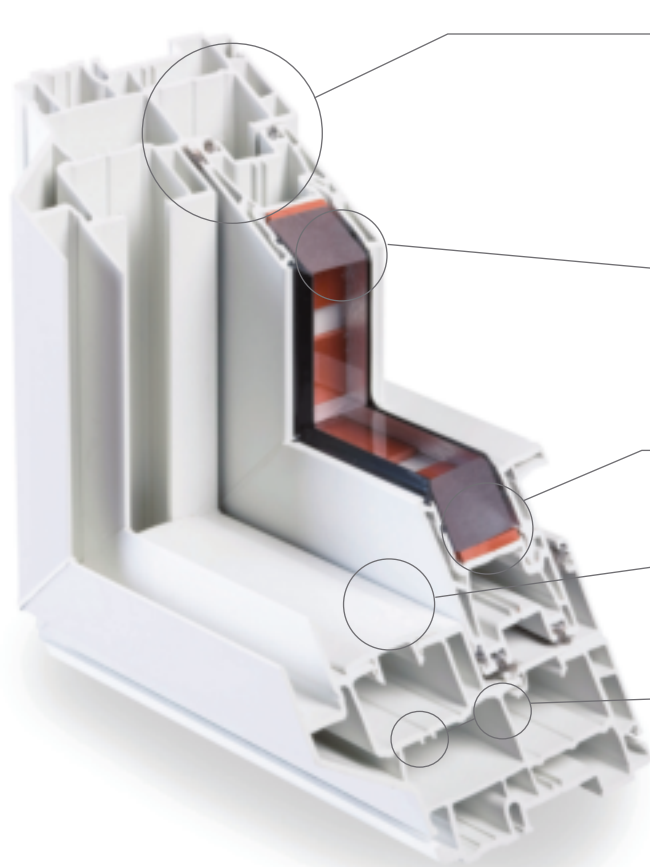
At P.H. Tech, today's leading technologies go into a complete line of fully accessorized windows, making it easy for you to customize windows to your exact needs. This window is completely compatible with all other P.H. Tech window systems and designed for use with all interior and exterior accessories.



Double-Slider



Double-Hung



- 1 These windows have the highest number of internal chambers, lending them outstanding insulation and sound abatement qualities, as well as thermal efficiency and increased sturdiness.
- 2 Interior glazing bead design constitutes a key security feature, allowing the window to withstand winds of over 330 km/h (205 mph).
- 3 The full size, double-walled handle bead is exceptionally sturdy.
- 4 The double walls of the sash give it increased sound abatement qualities and strength.
- 5 Multiple weather stripping provides remarkable airtightness, reducing heating and air conditioning costs.



Test results for product manufactured according to P.H. Tech specifications\*

	DIMENSIONS	CSA A440				AAMA / WDMA / CSA 101 / I.S 2 / A440-05
Double-hung windows	1000 x 1600 (40 x 63)	A3	B4	C4	F2	H-R55
Double-slider windows	1600 x 1100 (63 x 43)	A3	B3	C3	F2	HS-R50

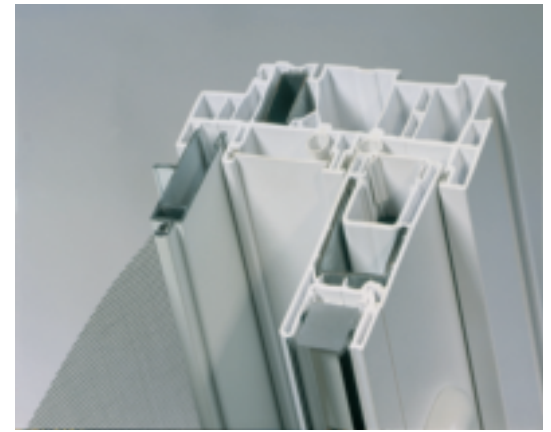
\*Test performed by an independent laboratory.

Refer to the test report for detailed manufacturing specifications recommended by P.H. Tech



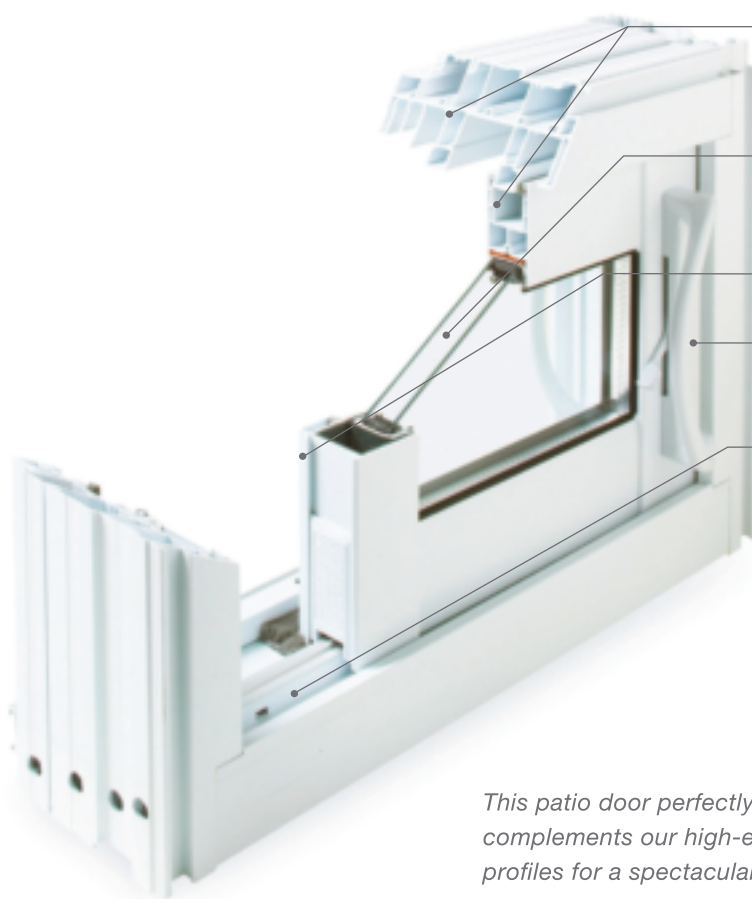
# ALL-UPVC PATIO DOORS

The quietest, most thermally efficient door available on the market today. This all-uPVC patio door series opens up the future to a new generation of premium-quality all-uPVC doors with a host of outstanding features and benefits.



## Superior Stability

Galvanized steel reinforced panels ensure rigidity and stable operation.



- 1 Strong and deep multi-chamber profiles offer greater thermal efficiency and increased sound abatement.
- 2 Sealed units available with a variety of performance options.
- 3 Operating panel slides effortlessly.
- 4 Choice of standard or multipoint locking system.
- 5 Exclusive, high-performance patented water draining system incorporated to the lower sill.

*This patio door perfectly complements our high-end window profiles for a spectacular look.*



## Standard Features

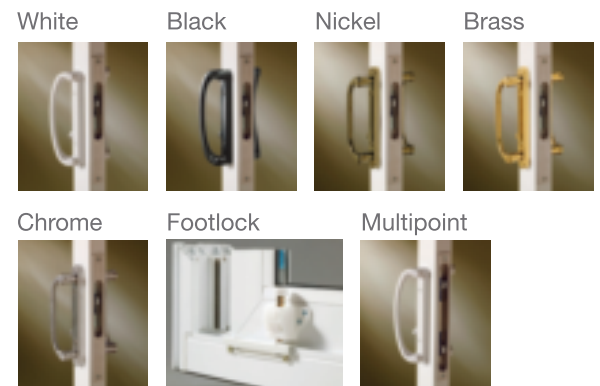
### Original Vice-Versa™ feature

The direction of opening can be changed from left to right or vice-versa simply by reversing the panels and re-snapping our exclusive wheel system.

### Sturdy screen

Rugged features—rigid enameled aluminium alloy frame, self-cleaning tracks, anodized aluminium track built into sill—ensure smooth operation. Extruded screen with stainless steel screws and patented adjustable spring loaded suspension system in each corner are designed not to derail or jam.

## Options



# E-INDEX



## 1. Maintenance-free for life

The window profiles are made from an exclusive, 100% virgin uPVC powder compound that is entirely lead-free.

This special compound gives the system better resistance to impact and discoloration.

The window profiles are maintenance-free and will not crack, blister or warp.

## 2. Attractive design

Fusion welding gives a more attractive appearance and eliminates the need for adhesives and sealants.

Result: a flawless, 100% watertight and airtight surface.

Internal walls are also welded for increased overall structural strength.

Inside and outside design accessories.

## 3. No leaks, no fuss, no moisture

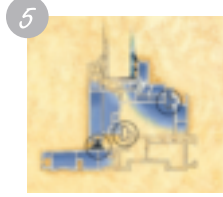
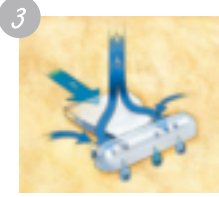
Our patented drainage system eliminates water faster and more efficiently than any other system on the market.

You no longer have to worry about potential water damage to your windows.

## 4. No drafts, no energy loss

Airtightness is ensured by triple or quadruple weather stripping (depending on window model).

Air, dust and dirt infiltration are virtually eliminated.



Result: greater comfort—and lower utility bills.

Frame provision prevents the crushing of the bubble weather strip.



## 5. Multi-beneficial frames

The multi-chamber profiles have more chambers than any competing product.

Transition from hot to cold inside the structure is gradual. Our system provides superior thermal insulation—and the frame is distortion-proof.

Multiple air chambers provide excellent sound reduction.

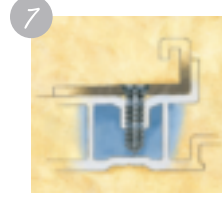
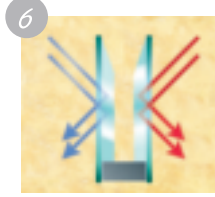
## 6. Your choice of glazing

Depending on the model, glazing of different types and thicknesses can be applied, including single, double, triple and low-E glazing and laminated glass ( $\frac{3}{8}$ " to  $1\frac{3}{8}$ ").

The glazing bead is designed to withstand extreme conditions, including winds up to 375 km/h (235 mph).

Located inside, the glazing bead provides greater security and facilitates any glazing replacement.

## 7. Security-minded



Opening mechanism and high-security multipoint lock parts are firmly fastened in screw boxes and stay secured.

The exclusive screws are specially designed for uPVC.

All screws install through a minimum of two walls for greater stability.

## 8. Designed to make life easier

Depending on the model, casements open a full 90° and sashes tilt in for easy cleaning.

Opening mechanisms and lock parts come in a corrosion-proof finish for greater durability.

## 9. The ultimate investment

Superior quality windows preserve your home's long-term structural integrity.

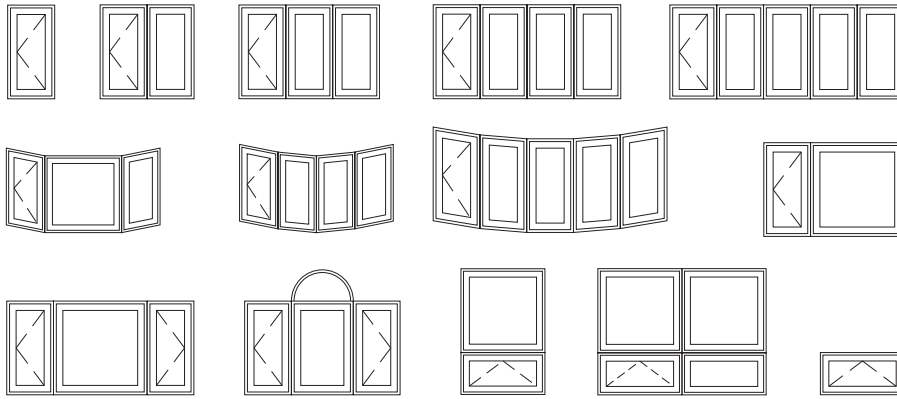
These window systems are a value-added feature for your home, with increased comfort, minimal maintenance costs and refreshed style.

These all-PVC window systems undergo thorough performance testing to ensure years of trouble-free operation.

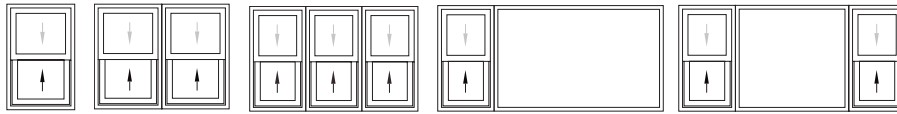




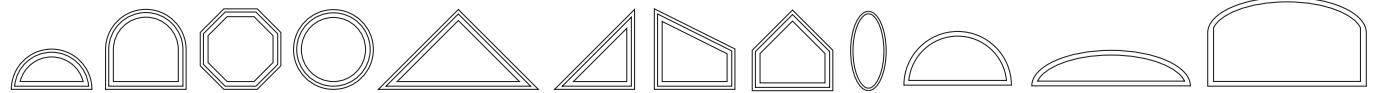
# ACCESSORIES & CUSTOM SHAPES



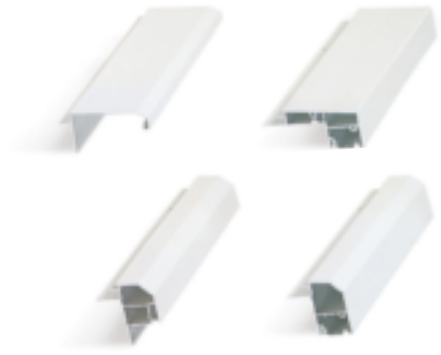
Casement / Awning



Hung / Slider

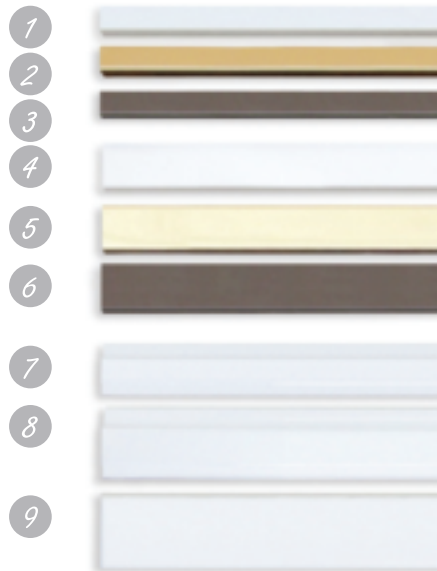


Picture Windows



OPTIONAL ACCESSORIES

All available Accessories can be viewed in our Showroom.



## GRILL OPTIONS

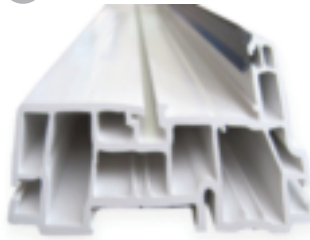
1. Flat Bar 3/8" x 1/4" - white
2. Flat Bar 3/8" x 1/4" - brass
3. Flat Bar 3/8" x 1/4" - pewter
4. Flat Bar 5/8" x 1/4" - white
5. Flat Bar 5/8" x 1/4" - brass
6. Flat Bar 5/8" x 1/4" - pewter
7. Georgian Bar 3/4" x 5/16" - white
8. Georgian Bar 1" x 5/16" - white
9. Flat Bar 1" - white

More grill options can be viewed in our showroom.

WE'LL SHOW YOU OURS, IF YOU SHOW US YOURS

## EDUCATING THE CONSUMER

1



Before Welding

2



After Welding  
*Corner Cut Open*

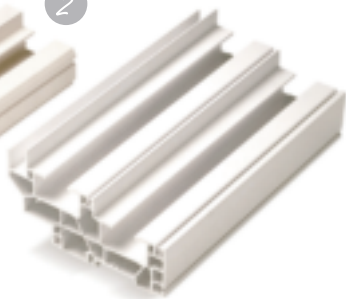
Anig Window frames and sashes are heat welded. The vinyl walls become substantially thicker as you can see in photograph B (after welding)

1



Competitors

2



Anig Chambers



Competitors  
*Mismatch*

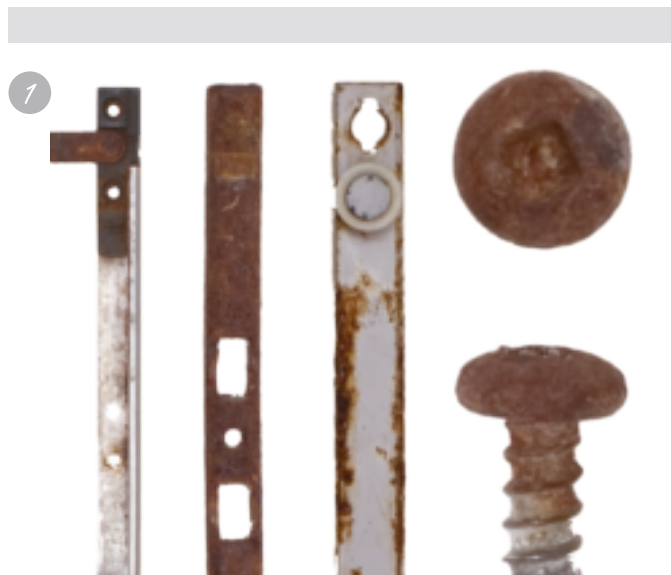


Anig Windows  
*Perfect Match*

Some competitors use mismatching profiles for reasons such as cutting costs. Mismatching profiles may compromise corner weld strength. The mismatching section does not weld fully to the adjacent extrusion. This may result in a weaker weld which may lead to premature weld failure. Welds to nothing. (-----)

When Vinyl extrusions are welded properly, the corners become the strongest part of your window. Anig Windows use only P.H. Tech extrusion which match on all four sides of every frame and sash. The heavy external walls and matching extrusion optimize weld strength and longevity of the welds (Note picture D).

## Rust Never Sleeps



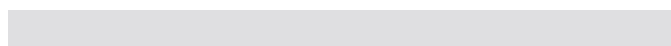
Competitors



Anig Windows

## Anig Windows EXTERIOR Perfect Match Colours

Anig Windows Perfect Match using SICO Acrythane 3000 palette. \*Actual colour may vary slightly.



## Anig Windows INTERIOR Colours



PH Tech White

PH Tech Beige



2040 Ellesmere Road, Unit 1  
Toronto, ON, Canada  
M1H 3B6

1-800-570-2870  
416-438-7213  
Fax: 416-438-7301  
www.anigwindows.com

Distributed by:



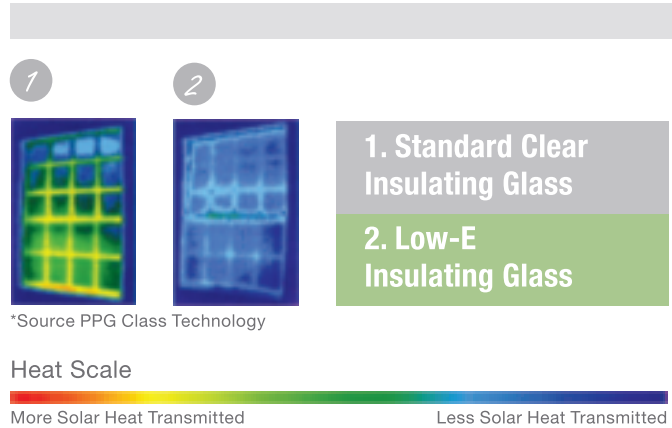
## The Low-E Glass Difference

Low-E glass helps your home be more energy efficient and comfortable thanks to an almost invisible, microscopically-thin coating that blocks out solar energy and keeps in furnace heat.

As you can see from the picture below, you can feel the dramatic difference this thin coating can make. The window with Low-E glass transmits far less heat than the clear glass window. All that heat is being blocked by the Low-E coating.

Choose Low-E glass windows to feel more comfortable year round and for years to come.

### Infrared Thermography



### Certificates



**WINDOWS & DOORS**  
Proudly Canadian